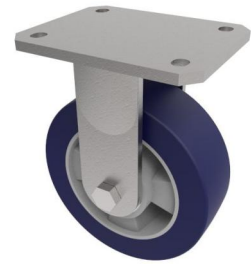


Softer Polyurethane Plate Fixed Castor 200mm 700kg Load

Product code: BZSABF200SPABJ



Fabricated zinc plated fixed castor with a top plate fixing fitted with a blue 75 shore A polyurethane tyred on aluminium centred wheel with a ball bearing. Wheel diameter 200mm, tread width 50mm, overall height 250mm, plate size 138mm x 110mm, hole centres 105mm x 75/80mm. Load capacity 700kg at 4kph, 290kg at 16kph. ** FOR INTERNAL AND EXTERNAL TOWING USE**

Diameter (mm)	200
Fixing Option	Plate
Castor Type	Fixed
Bearing Type	Ball
Height (mm)	250
Plate Size (mm)	138 x 110
Hole Centres (mm)	105 x 80
To Suit Fixing Bolt (mm)	10
Wheel Material	Polyurethane on Aluminium
Colour / Shore Hardness	Blue Polyurethane on Aluminium Rim / 75 Shore A
Temperature Resistance	-20 °C TO +70 °C
Top Plate Thickness (mm)	8
Fork Thickness (mm)	6
Load Capacity (kg)	700
Tread (mm)	50