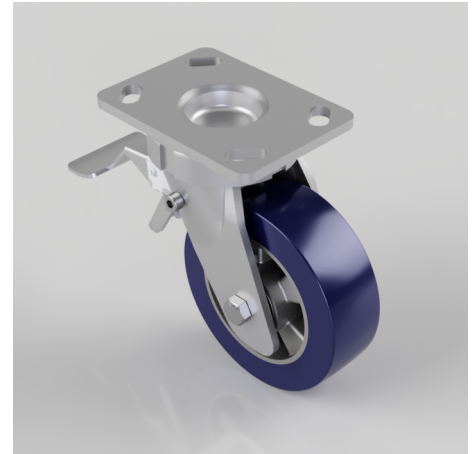


Softer Polyurethane Plate Swivel Castor 150mm 500kg Load

Product code: BZK150SPABJSWB

Fabricated steel swivel castor with a top plate fixing fitted with a blue 75 shore A polyurethane tyre on aluminium centred wheel with ball bearings with a total lock brake. Wheel diameter 150mm, tread width 50mm, overall height 200mm, top plate 138mm x 110mm, hole centres 121/105 x 59/80mm. Load capacity 500kg at 4kph and 200kg at 16kph ** FOR INTERNAL AND EXTERNAL TOWING USE **



Diameter (mm)	150
Fixing Option	Plate
Castor Type	Swivel with Total Lock Brake
Bearing Type	Ball
Height (mm)	200
Plate Size (mm)	150 x 110
Hole Centres (mm)	105/121 x 80/59
To Suit Fixing Bolt (mm)	12
Wheel Material	Polyurethane on Aluminium
Colour / Shore Hardness	Blue Polyurethane on Aluminium Rim / 75 Shore A
Temperature Resistance	-20 °C TO +70 °C
Top Plate Thickness (mm)	7.5
Fork Thickness (mm)	6
Swivel Radius (mm)	140
Load Capacity (kg)	500
Tread (mm)	50

BIL GROUP LTD

Porte Marsh Road, Calne, Wiltshire, SN11 9BW

Registered in England No: 2603821

VAT Reg: GB572705729

