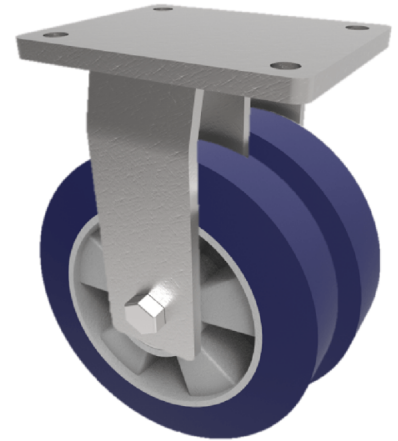


Softer Polyurethane Plate Swivel Castor 200mm 1400kg Load

Product code: 2BZQ200SPABJ

Twin wheeled swivel castor with a top plate fixing fitted with 2 x blue elastic 75 shoreA polyurethane wheels on aluminium centers with ball journal bearings. Wheel diameter 2 x 200mm, tread width 2 x 50mm, overall height 264mm, top plate 175mm x 140mm, hole centres 140mm x 105mm. Load capacity 1400kg at 4kph and 560kg at 16kph ** FOR INTERNAL AND EXTERNAL TOWING USE **



Diameter (mm)	200
Fixing Option	Plate
Castor Type	Swivel
Bearing Type	Ball
Plate Size (mm)	175 X 140
Hole Centres (mm)	140 X 105
Height (mm)	264
Swivel Radius (mm)	177
To Suit Fixing Bolt (mm)	14
Wheel Material	Polyurethane on Aluminium
Colour / Shore Hardness	Blue Polyurethane on Aluminium Rim / 75 Shore A
Temperature Resistance	"-20 °C TO +70 °C
Tread (mm)	2 x 50
Load Capacity (kg)	1400
Top Plate Thickness (mm)	12
Fork Thickness (mm)	8

BIL GROUP LTD

Porte Marsh Road, Calne, Wiltshire, SN11 9BW

Registered in England No: 2603821

VAT Reg: GB572705729

