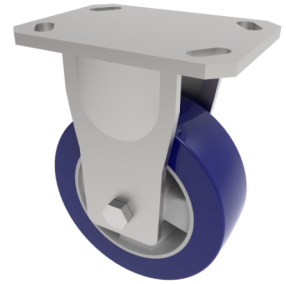


Softer Polyurethane Plate Swivel Castor 200mm 700kg Load

Product code: BZKF200SPABJ



Fabricated fixed castor with a top plate fixing fitted with a blue 75 shore A polyurethane tyred aluminium centred ball bearing wheel, Wheel diameter 200mm, tread width 50mm, overall height 250mm, top plate 150mm x 110mm, hole centres 105mm x 80mm or 121mm x 59mm. Load capacity 700kg at 4kph and 280kp at 16kph ** FOR INTERNAL AND EXTERNAL TOWING USE **

Diameter (mm)	200
Fixing Option	Plate
Castor Type	Fixed
Bearing Type	Ball
Height (mm)	250
Plate Size (mm)	150 x 110
Hole Centres (mm)	105/121 x 80/59
To Suit Fixing Bolt (mm)	12
Wheel Material	Polyurethane on Aluminium
Colour / Shore Hardness	Blue Polyurethane on Aluminium Rim / 75 Shore A
Temperature Resistance	-20 °C TO +70 °C
Top Plate Thickness (mm)	7.5
Fork Thickness (mm)	6
Load Capacity (kg)	700
Tread (mm)	50