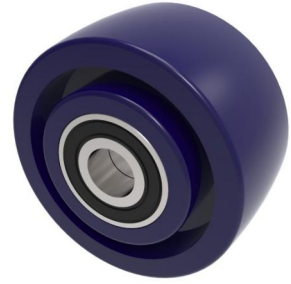


Solid Cast Polyurethane Cast Iron 125mm Ball Bearing Wheel 500kg Load

Product code: BZH125WPKBJM20



Solid blue elastomer with a ball bearing. Diameter 125mm, tread width 50mm, bore size 20mm, hub length 56mm. Load capacity 500kg

Bearing Type	Ball
Bore Size (mm)	20
Diameter (mm)	125
Hub Width (mm)	56
Load Capacity (kg)	500
Tread (mm)	50
Wheel Material	Polyurethane on Aluminium
Colour / Shore Hardness	Solid Elastomer on Aluminium Rim / 73 Shore D
Temperature Resistance	-20 °C TO +80 °C

BIL GROUP LTD

Porte Marsh Road, Calne, Wiltshire, SN11 9BW

Registered in England No: 2603821

VAT Reg: GB572705729

