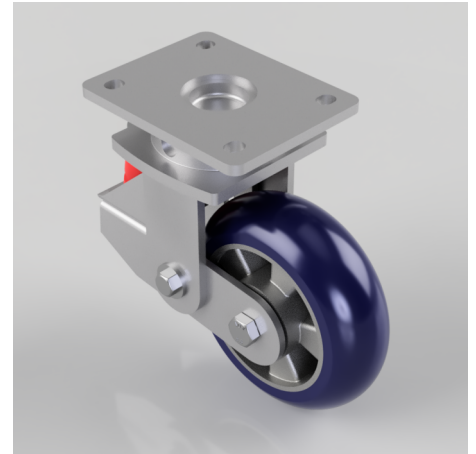


Sprung Loaded Ergonomic Polyurethane Swivel Plate Castor 150mm 500kg

Product code: BZKL150RSPABJSPR

Fabricated swivel castor with top plate fixing fitted with a 150mm x 50mm blue ergonomic round thread 75 shore A polyurethane tyred on an aluminium centred wheel with ball bearings. Overall height 203mm/183mm, plate size 138mm x 110mm, hole centres 105mm x 80/75mm. Load capacity 500kg. Red polyurethane spring. Max speed 4kph.



Diameter (mm)	150
Fixing Option	Plate
Castor Type	Swivel
Bearing Type	Ball
Plate Size (mm)	138 x 110
Hole Centres (mm)	105 x 80
To Suit Fixing Bolt (mm)	10
Wheel Material	Polyurethane on Aluminium
Colour / Shore Hardness	Blue Ergonomic Polyurethane on Aluminium Rim / 75 Shore A
Temperature Resistance	-20 °C TO +70 °C
Top Plate Thickness (mm)	7
Fork Thickness (mm)	6
Swivel Radius (mm)	137
Load Capacity (kg)	500
Height Un-Laden (mm)	203
Height Fully Laden (mm)	183

BIL GROUP LTD

Porte Marsh Road, Calne, Wiltshire, SN11 9BW

Registered in England No: 2603821

VAT Reg: GB572705729

