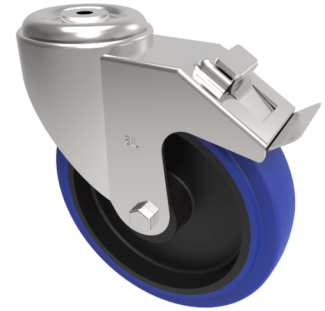


Stainless Steel Blue Elastic Rubber 65ShoreA Bolt Hole Swivel Castor Brake 150mm 300kg

Product code: SSMM150SRNBBH16SWB



Stainless steel grade 304 swivel castor with a bolthole fixing fitted with a 65 shore A blue elastic rubber wheel on a black nylon centre with stainless steel roller bearings and total lock brake. Wheel diameter 150mm, tread width 40mm, overall height 190mm, load capacity 300kg. (Catalogue SKU SSMM150SRNBBH16SWB)

Diameter (mm)	150
Fixing Option	Bolt Hole
Castor Type	Swivel with Total Lock Brake
Height (mm)	190
Wheel Material	Rubber on Nylon
Colour / Shore Hardness	Blue Elastic Rubber on Nylon Rim / 65 Shore A
Bearing Type	Roller
Tread (mm)	40
Fork Thickness (mm)	3
To Suit Fixing Bolt (mm)	16
Load Capacity (kg)	300
Temperature Resistance	-30 °C TO +80 °C
Head Dia (mm)	115
Swivel Radius (mm)	167