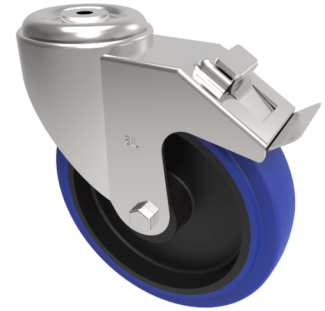


## Stainless Steel Blue Elastic Rubber 65ShoreA Bolt Hole Swivel Castor Brake 200mm 400kg

**Product code: SSMM200RNBJBH16SWB**



Grade 304 Pressed stainless steel swivel castor with a 12mm bolthole fitted with a blue 75 shore A elastic rubber tyre on a black nylon centred wheel with ball bearings and a total lock brake. 200mm wheel diameter, 46mm tread width, 235mm overall height, load capacity of 400kgs

Diameter (mm)	200
Fixing Option	Bolt Hole
Castor Type	Swivel with Total Lock Brake
Height (mm)	235
Wheel Material	Rubber on Nylon
Colour / Shore Hardness	Blue Rubber on Nylon Rim / 75 Shore A
Bearing Type	Ball
Tread (mm)	50
Fork Thickness (mm)	3
To Suit Fixing Bolt (mm)	16
Load Capacity (kg)	400
Temperature Resistance	-20 °C TO +60 °C
Head Dia (mm)	115
Swivel Radius (mm)	167

### BIL GROUP LTD

Porte Marsh Road, Calne, Wiltshire, SN11 9BW

Registered in England No: 2603821

VAT Reg: GB572705729

