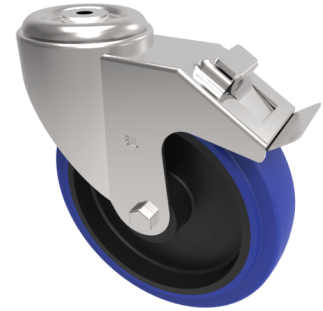


Stainless Steel Blue Elastic Rubber 65ShoreA Bolt Hole Swivel Castor Brake 200mm 500kg

Product code: SSMM200SRNBJBH16SWB



Grade 304 Pressed stainless steel swivel castor with a 16mm bolthole fitted with a blue 65 shore A elastic rubber tyre on a black nylon centred wheel with ball bearings and a total lock brake . 200mm wheel diameter, 50mm tread width, 235mm overall height with a load capacity of 500kgs REACH compliant also PAH-Free rubber to confirm to EU-directive 2005/69/EC

Diameter (mm)	200
Fixing Option	Bolt Hole
Castor Type	Swivel with Total Lock Brake
Height (mm)	235
Wheel Material	Rubber on Nylon
Colour / Shore Hardness	Blue Elastic Rubber on Nylon Rim / 65 Shore A
Bearing Type	Ball
Tread (mm)	50
Fork Thickness (mm)	3
To Suit Fixing Bolt (mm)	16
Load Capacity (kg)	500
Temperature Resistance	-30 °C TO +80 °C
Head Dia (mm)	115
Swivel Radius (mm)	167

BIL GROUP LTD

Porte Marsh Road, Calne, Wiltshire, SN11 9BW

Registered in England No: 2603821

VAT Reg: GB572705729

