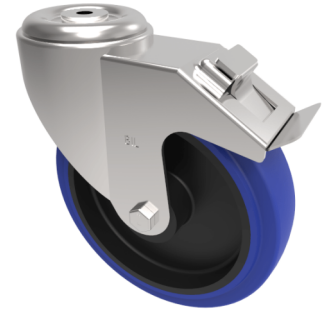


## Stainless Steel Blue Elastic Rubber 65ShoreA Bolt Hole Swivel Castor Brake 200mm 500kg

**Product code: SSMM200SRNBBH16SWB**



Grade 304 Pressed stainless steel swivel castor with a 16mm bolt hole, fitted with a blue 65 shore A elastic rubber tyre on a black nylon centred wheel with stainless steel roller bearing and a total lock brake. 200mm wheel diameter, 50mm tread width, 235mm overall height, load capacity of 500kgs

Diameter (mm)	200
Fixing Option	Bolt Hole
Castor Type	Swivel with Total Lock Brake
Height (mm)	235
Wheel Material	Rubber on Nylon
Colour / Shore Hardness	Blue Elastic Rubber on Nylon Rim / 65 Shore A
Bearing Type	Roller
Tread (mm)	50
Fork Thickness (mm)	3
To Suit Fixing Bolt (mm)	16
Load Capacity (kg)	500
Temperature Resistance	-30 °C TO +80 °C
Head Dia (mm)	115
Swivel Radius (mm)	167

### BIL GROUP LTD

Porte Marsh Road, Calne, Wiltshire, SN11 9BW

Registered in England No: 2603821

VAT Reg: GB572705729

