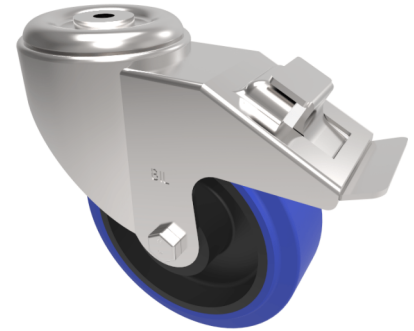


Stainless Steel Blue Elastic Rubber 75ShoreA Bolt Hole Swivel Castor Brake 150mm 300kg

Product code: SSMM150RNBBH16SWB



Grade 304 Pressed stainless steel swivel castor with a bolt hole fixing fitted with a blue 75 shore A elastic rubber tyre on a black nylon centre with a roller bearing and total lock brake. Wheel diameter 150mm, tread width 50mm, overall height 190mm. Load capacity 300kg. (Catalogue SKU SSMM150RNBBH16SWB)

Diameter (mm)	150
Fixing Option	Bolt Hole
Castor Type	Swivel with Total Lock Brake
Height (mm)	190
Wheel Material	Rubber on Nylon
Colour / Shore Hardness	Blue Rubber on Nylon Rim / 75 Shore A
Bearing Type	Roller
Tread (mm)	50
Fork Thickness (mm)	3
To Suit Fixing Bolt (mm)	16
Load Capacity (kg)	300
Temperature Resistance	-20 °C TO +60 °C
Head Dia (mm)	115
Swivel Radius (mm)	167