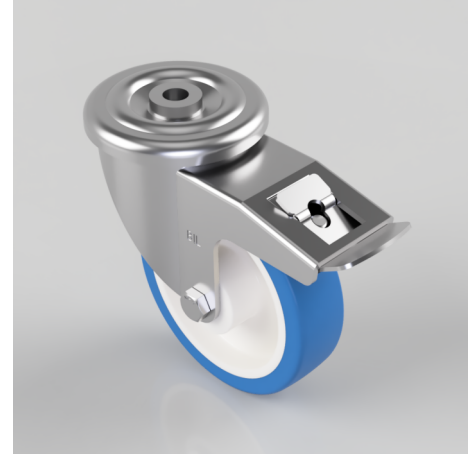


Stainless Steel Blue Polyurethane Nylon Bolt Hole Swivel Castor Brake 150mm 500kg Load

Product code: SSMM150ENPBBH16SWB

Grade 304 Pressed stainless steel swivel castor with a bolt hole fitted with a 82 shore A blue polyurethane white nylon centred wheel with roller bearing and total lock brake. Wheel diameter 150mm, tread width 40mm, overall height 188mm, Load capacity 500kg.



Diameter (mm)	150
Fixing Option	Bolt Hole
Castor Type	Swivel with Total Lock Brake
Height (mm)	188
Wheel Material	Polyurethane on Nylon
Colour / Shore Hardness	Blue Polyurethane on NylonRim / 82 Shore A
Bearing Type	Roller
Tread (mm)	40
Fork Thickness (mm)	4
To Suit Fixing Bolt (mm)	16
Load Capacity (kg)	500
Temperature Resistance	-30 °C TO +60 °C
Head Dia (mm)	114
Swivel Radius (mm)	167

BIL GROUP LTD

Porte Marsh Road, Calne, Wiltshire, SN11 9BW

Registered in England No: 2603821

VAT Reg: GB572705729

