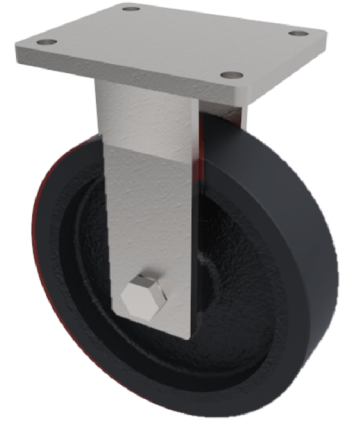


Steel - Ductile Plate Fixed Castor 200mm 3600kg Load

Product code: BZQFXX200STTT

Fabricated fixed fitted with a ductile steel wheel with taper roller bearings. Wheel diameter 200mm, tread 100mm, overall height 280mm, top plate 255mm x 200mm, hole centres 210mm x 160mm. Load capacity 3600kg.



Diameter (mm)	200
Fixing Option	Plate
Castor Type	Fixed
Bearing Type	Taper
Height (mm)	280
Plate Size (mm)	255 X 200
Hole Centres (mm)	210 X 160
To Suit Fixing Bolt (mm)	16
Wheel Material	Steel
Colour / Shore Hardness	Black Painted Ductile Steel
Temperature Resistance	-30 °C TO +80 °C
Top Plate Thickness (mm)	16
Fork Thickness (mm)	12
Load Capacity (kg)	3600
Tread (mm)	100