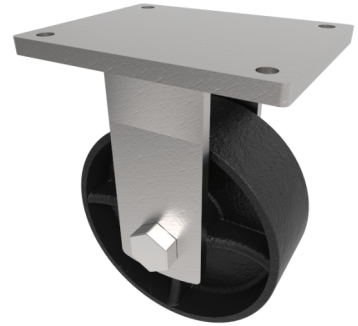


Steel - Ductile Plate Fixed Castor 250mm 5400kg Load

Product code: BZQFXX250STTT

Fabricated fixed castor with a top plate fixing fitted with a black painted ductile cast steel wheel with taper roller bearings. Wheel diameter 250mm, tread width 100mm, overall height 330mm, top plate 255mm x 200mm, hole centres 210mm x 160mm. Load capacity 5400kg.



Diameter (mm)	250
Fixing Option	Plate
Castor Type	Fixed
Bearing Type	Taper
Height (mm)	330
Plate Size (mm)	255 X 200
Hole Centres (mm)	210 X 160
To Suit Fixing Bolt (mm)	16
Wheel Material	Steel
Colour / Shore Hardness	Black Painted Ductile Steel
Temperature Resistance	-30 °C TO +80 °C
Top Plate Thickness (mm)	16
Fork Thickness (mm)	12
Load Capacity (kg)	5400
Tread (mm)	100

BIL GROUP LTD

Porte Marsh Road, Calne, Wiltshire, SN11 9BW

Registered in England No: 2603821

VAT Reg: GB572705729

