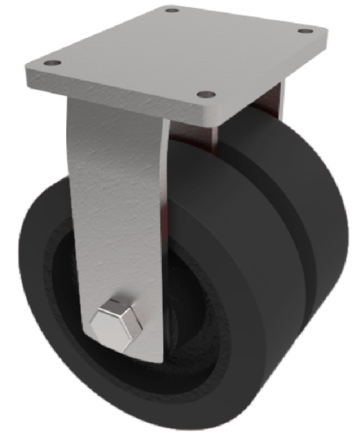


## Steel - Ductile Plate Fixed Castor 300mm 7500kg Load

**Product code: 2BZXXHF300STTT**

Fabricated twin wheel fixed castor with a top plate fixing fitted with a steel ductile wheel with a taper bearings. Wheel diameter 300mm, tread width 2 x 100mm, overall height 395mm, plate size 255 x 200mm, hole centres 210mm x 160mm. Load capacity 7500kg.



Diameter (mm)	300
Fixing Option	Plate
Castor Type	Fixed
Bearing Type	Taper
Plate Size (mm)	255 X 200
Hole Centres (mm)	210 X 160
Height (mm)	395
To Suit Fixing Bolt (mm)	16
Wheel Material	Steel
Colour / Shore Hardness	Black Painted Ductile Steel
Temperature Resistance	&quot;-30 °C TO +80 °C
Tread (mm)	2 x 100
Load Capacity (kg)	7500
Top Plate Thickness (mm)	16
Fork Thickness (mm)	12

### BIL GROUP LTD

Porte Marsh Road, Calne, Wiltshire, SN11 9BW

Registered in England No: 2603821

VAT Reg: GB572705729

