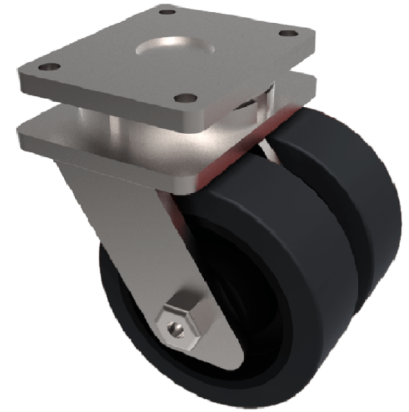


Steel - Ductile Plate Swivel Castor 250mm 7500kg Load

Product code: 2BZXXH250STTT

Fabricated black painted swivel castor fitted with 2 ductile steel wheels with taper roller bearings. Wheel diameter 250mm, tread 100mm, overall height 330mm, top plate 255mm x 200mm, hole centres 210mm x 160mm. Load capacity 7500kg.



Diameter (mm)	250
Fixing Option	Plate
Castor Type	Swivel
Bearing Type	Taper
Plate Size (mm)	255 X 200
Hole Centres (mm)	210 X 160
Height (mm)	330
Swivel Radius (mm)	225
To Suit Fixing Bolt (mm)	16
Wheel Material	Steel
Colour / Shore Hardness	Black Painted Ductile Steel
Temperature Resistance	"-30 °C TO +80 °C
Tread (mm)	2 x 100
Load Capacity (kg)	7500
Top Plate Thickness (mm)	21
Fork Thickness (mm)	12

BIL GROUP LTD

Porte Marsh Road, Calne, Wiltshire, SN11 9BW

Registered in England No: 2603821

VAT Reg: GB572705729

