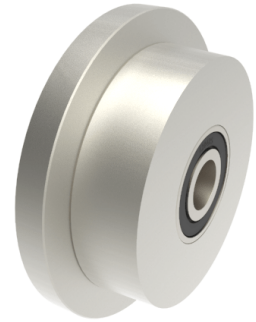


Steel Flanged 100mm Ball Bearing Rail Wheel 1140kg

Product code: 100WMSSFBJM25



POA Single Flanged steel wheel with ball bearings. Wheel diameter 100mm, outer flange diameter 125mm, tread width 25mm, total width 37mm, hub width 37mm bore 25mm Load capacity 1140kg. ****MANUFACTURED TO ORDER****

Wheel Material	Steel
Colour / Shore Hardness	Steel
Diameter (mm)	100
Flanged Diameter (mm)	125
Flange Width (mm)	25
Load Capacity (kg)	1140
Bearing Type	Ball
Bore Size (mm)	25
Total Tread (mm)	37
Tread (mm)	25
Hub Width (mm)	37
Temperature Resistance	-30 °C to +120 °C

BIL GROUP LTD

Porte Marsh Road, Calne, Wiltshire, SN11 9BW

Registered in England No: 2603821

VAT Reg: GB572705729

