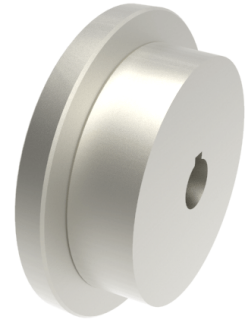


Steel Flanged 100mm Keyway Rail Wheel 1300kg

Product code: 100WMSSFKM20



POA Single Flanged steel wheel with keyway. Wheel diameter 100mm, outer flange diameter 125mm, Flange Width 25mm, total width 37mm, hub width 37mm bore 20mm Load capacity 1300kg. ****MANUFACTURED TO ORDER****

Wheel Material	Steel
Colour / Shore Hardness	Steel
Diameter (mm)	100
Flanged Diameter (mm)	125
Flange Width (mm)	25
Load Capacity (kg)	1300
Bearing Type	Keywayed
Bore Size (mm)	20
Total Tread (mm)	37
Tread (mm)	25
Hub Width (mm)	37
Temperature Resistance	-30 °C to +120 °C

BIL GROUP LTD

Porte Marsh Road, Calne, Wiltshire, SN11 9BW

Registered in England No: 2603821

VAT Reg: GB572705729

