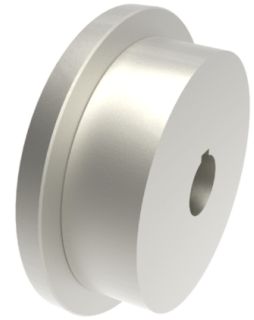


Steel Flanged 150mm Keyway Rail Wheel 3100kg

Product code: 150WMSSFKM35



POA Single Flanged steel wheel with keyway. Wheel diameter 150mm, outer flange diameter 180mm, flange width 40mm, hub width 55mm bore 35mm Load capacity 3,100kg.

****MANUFACTURED TO ORDER****

Wheel Material	Steel
Colour / Shore Hardness	Steel
Diameter (mm)	150
Flanged Diameter (mm)	180
Flange Width (mm)	40
Load Capacity (kg)	3100
Bearing Type	Keywayed
Bore Size (mm)	35
Total Tread (mm)	55
Tread (mm)	40
Hub Width (mm)	55
Temperature Resistance	-30 °C to +120 °C