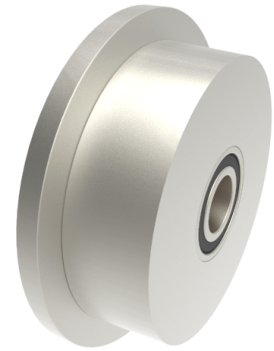


## Steel Flanged 200mm Ball Bearing Rail Wheel 3380kg

**Product code: 200WMSSFBJM40**



**POA** Single Flanged steel wheel with ball bearings. Wheel diameter 200mm, outer flange diameter 240mm, tread width 55mm, total width 70mm, hub width 70mm bore 40mm Load capacity 3380kg. **\*\*MANUFACTURED TO ORDER\*\***

Wheel Material	Steel
Colour / Shore Hardness	Steel
Diameter (mm)	200
Flanged Diameter (mm)	240
Flange Width (mm)	55
Load Capacity (kg)	3380
Bearing Type	Ball
Bore Size (mm)	40
Total Tread (mm)	70
Tread (mm)	55
Hub Width (mm)	70
Temperature Resistance	-30 °C to +120 °C

### BIL GROUP LTD

Porte Marsh Road, Calne, Wiltshire, SN11 9BW

Registered in England No: 2603821

VAT Reg: GB572705729

