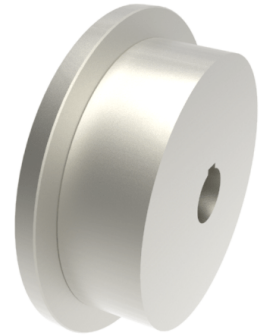


Steel Flanged 200mm Keyway Rail Wheel 5700kg

Product code: 200WMSSFKM40



POA Single Flanged steel wheel with keyway. Wheel diameter 200mm, outer flange diameter 240mm, flange width 55mm, total width 70mm, hub width 70mm bore 40mm Load capacity 5700kg. ****MANUFACTURED TO ORDER****

| | |
|-------------------------|-------------------|
| Wheel Material | Steel |
| Colour / Shore Hardness | Steel |
| Diameter (mm) | 200 |
| Flanged Diameter (mm) | 240 |
| Flange Width (mm) | 55 |
| Load Capacity (kg) | 5700 |
| Bearing Type | Keywayed |
| Bore Size (mm) | 40 |
| Total Tread (mm) | 70 |
| Tread (mm) | 55 |
| Hub Width (mm) | 70 |
| Temperature Resistance | -30 °C to +120 °C |

BIL GROUP LTD

Porte Marsh Road, Calne, Wiltshire, SN11 9BW

Registered in England No: 2603821

VAT Reg: GB572705729

