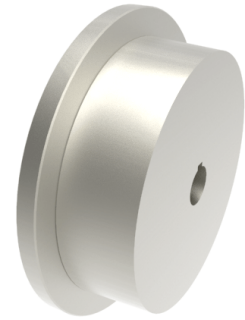


## Steel Flanged 200mm Keyway Rail Wheel 5700kg

**Product code: 200WMSSFKM30**



**POA** Single Flanged steel wheel with keyway. Wheel diameter 200mm, outer flange diameter 240mm, flange width 55mm, total width 70mm, hub width 70mm bore 30mm Load capacity 5700kg. **\*\*MANUFACTURED TO ORDER\*\***

Wheel Material	Steel
Colour / Shore Hardness	Steel
Diameter (mm)	200
Flanged Diameter (mm)	240
Flange Width (mm)	55
Load Capacity (kg)	5700
Bearing Type	Keywayed
Bore Size (mm)	30
Total Tread (mm)	70
Tread (mm)	55
Hub Width (mm)	70
Temperature Resistance	-30 °C to +120 °C

### BIL GROUP LTD

Porte Marsh Road, Calne, Wiltshire, SN11 9BW

Registered in England No: 2603821

VAT Reg: GB572705729

