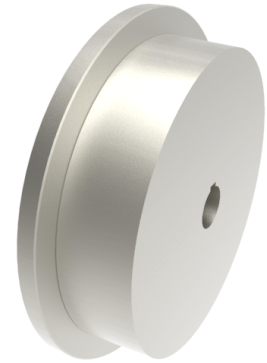


Steel Flanged 250mm Keyway Rail Wheel 7100kg

Product code: 250WMSSFKM35



POA Single Flanged steel wheel with keyway. Wheel diameter 250mm, outer flange diameter 290mm, flange width 55mm, total width 70mm, hub width 70mm bore 35mm Load capacity 7100kg. ****MANUFACTURED TO ORDER****

Wheel Material	Steel
Colour / Shore Hardness	Steel
Diameter (mm)	250
Flanged Diameter (mm)	290
Flange Width (mm)	55
Load Capacity (kg)	7100
Bearing Type	Keywayed
Bore Size (mm)	35
Total Tread (mm)	70
Tread (mm)	55
Hub Width (mm)	70
Temperature Resistance	-30 °C to +120 °C

BIL GROUP LTD

Porte Marsh Road, Calne, Wiltshire, SN11 9BW

Registered in England No: 2603821

VAT Reg: GB572705729

