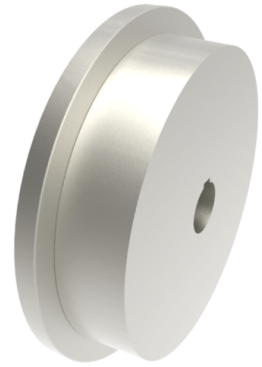


## Steel Flanged 300mm Keyway Rail Wheel 9300kg

**Product code: 300WMSSFKM50**

**POA** Single Flanged steel wheel with keyway. Wheel diameter 300mm, outer flange diameter 345mm, flange width 60mm, total width 80mm, hub width 80mm bore 50mm Load capacity 9300kg. **\*\*MANUFACTURED TO ORDER\*\***



Wheel Material	Steel
Colour / Shore Hardness	Steel
Diameter (mm)	300
Flanged Diameter (mm)	345
Flange Width (mm)	60
Load Capacity (kg)	9300
Bearing Type	Keywayed
Bore Size (mm)	50
Total Tread (mm)	80
Tread (mm)	60
Hub Width (mm)	80
Temperature Resistance	-30 °C to +120 °C

### BIL GROUP LTD

Porte Marsh Road, Calne, Wiltshire, SN11 9BW

Registered in England No: 2603821

VAT Reg: GB572705729

