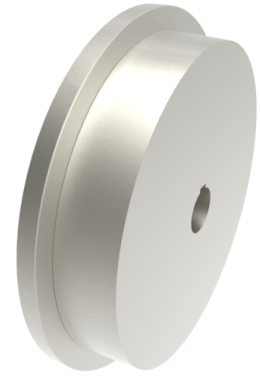


Steel Flanged 350mm Keyway Rail Wheel 10800kg

Product code: 350WMSSFKM50



POA Single Flanged steel wheel with keyway. Wheel diameter 350mm, outer flange diameter 395mm, flange width 60mm, total width 80mm, hub width 80mm bore 50mm Load capacity 10800kg. ****MANUFACTURED TO ORDER****

Wheel Material	Steel
Colour / Shore Hardness	Steel
Diameter (mm)	350
Flanged Diameter (mm)	395
Flange Width (mm)	60
Load Capacity (kg)	10800
Bearing Type	Keywayed
Bore Size (mm)	50
Total Tread (mm)	80
Tread (mm)	60
Hub Width (mm)	80
Temperature Resistance	-30 °C to +120 °C

BIL GROUP LTD

Porte Marsh Road, Calne, Wiltshire, SN11 9BW

Registered in England No: 2603821

VAT Reg: GB572705729

