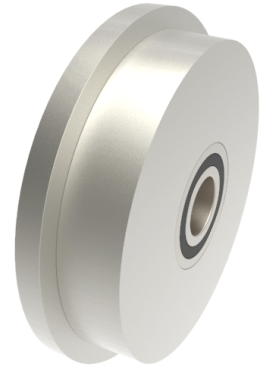


Steel Flanged 400mm Ball Bearing Rail Wheel 9785kg

Product code: 400WMSSFBJM75

POA Single Flanged steel wheel with ball bearings. Wheel diameter 400mm, outer flange diameter 445mm, tread width 70mm, total width 100mm, hub width 100mm bore 75mm Load capacity 9785kg. ****MANUFACTURED TO ORDER****



Wheel Material	Steel
Colour / Shore Hardness	Steel
Diameter (mm)	400
Flanged Diameter (mm)	450
Flange Width (mm)	70
Load Capacity (kg)	9785
Bearing Type	Ball
Bore Size (mm)	75
Total Tread (mm)	100
Tread (mm)	70
Hub Width (mm)	100
Temperature Resistance	-30 °C to +120 °C

BIL GROUP LTD

Porte Marsh Road, Calne, Wiltshire, SN11 9BW

Registered in England No: 2603821

VAT Reg: GB572705729

