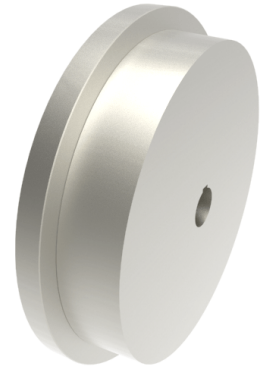


Steel Flanged 400mm Keyway Rail Wheel 14400kg

Product code: 400WMSSFKM50



POA Single Flanged steel wheel with keyway. Wheel diameter 400mm, outer flange diameter 445mm, flange width 70mm, total width 100mm, hub width 100mm bore 50mm Load capacity 14400kg. ****MANUFACTURED TO ORDER****

Wheel Material	Steel
Colour / Shore Hardness	Steel
Diameter (mm)	400
Flanged Diameter (mm)	445
Flange Width (mm)	70
Load Capacity (kg)	14400
Bearing Type	Keywayed
Bore Size (mm)	50
Total Tread (mm)	100
Tread (mm)	70
Hub Width (mm)	100
Temperature Resistance	-30 °C to +120 °C

BIL GROUP LTD

Porte Marsh Road, Calne, Wiltshire, SN11 9BW

Registered in England No: 2603821

VAT Reg: GB572705729

