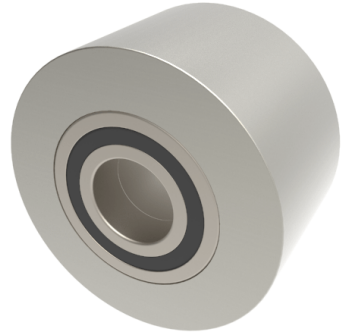


Steel Flat Tread 100mm Ball Bearing Rail Wheel 2040kg

Product code: 100RWMSFTBJM30



POA Heavy duty flat tread steel wheel with ball bearings. Wheel diameter 100mm, tread width 60mm, bore size 30mm, hub length 60mm. Load capacity 2040kg. ****MANUFACTURED TO ORDER****

| | |
|-------------------------|-------------------|
| Diameter (mm) | 100 |
| Tread (mm) | 60 |
| Bearing Type | Ball |
| Bore Size (mm) | 30 |
| Hub Width (mm) | 60 |
| Load Capacity (kg) | 2040 |
| Wheel Material | Steel |
| Colour / Shore Hardness | Steel |
| Temperature Resistance | -30 °C to +120 °C |

BIL GROUP LTD

Porte Marsh Road, Calne, Wiltshire, SN11 9BW

Registered in England No: 2603821

VAT Reg: GB572705729

