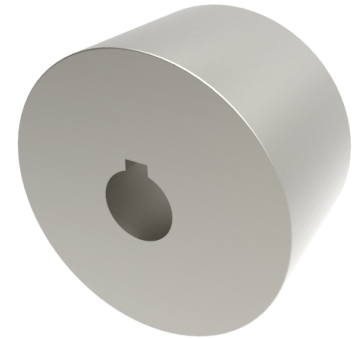


Steel Flat Tread 100mm Keyway Rail Wheel 3100kg

Product code: 100RWMSFTBKM25



POA Heavy duty flat tread steel wheel with keyway. Wheel diameter 100mm, tread width 60mm, bore size 25mm, hub length 60mm. Load capacity 3100kg. ****MANUFACTURED TO ORDER****

Diameter (mm)	100
Tread (mm)	60
Bore Size (mm)	25
Hub Width (mm)	60
Load Capacity (kg)	3100
Wheel Material	Steel
Colour / Shore Hardness	Steel
Temperature Resistance	-30 °C to +120 °C
Bearing Type	Keywayed

BIL GROUP LTD

Porte Marsh Road, Calne, Wiltshire, SN11 9BW

Registered in England No: 2603821

VAT Reg: GB572705729

