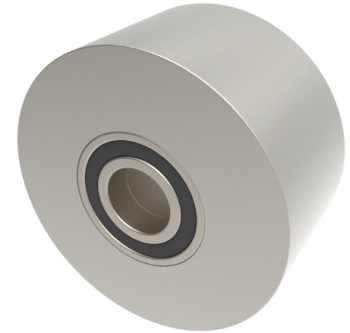


Steel Flat Tread 150mm Ball Bearing Rail Wheel 2800kg

Product code: 150RWMSFTBJM35



POA Heavy duty flat tread steel wheel with ball bearings. Wheel diameter 150mm, tread width 80mm, bore size 35mm, hub length 80mm. Load capacity 2800kg. ****MANUFACTURED TO ORDER****

Diameter (mm)	150
Tread (mm)	80
Bearing Type	Ball
Bore Size (mm)	35
Hub Width (mm)	80
Load Capacity (kg)	2800
Wheel Material	Steel
Colour / Shore Hardness	Steel
Temperature Resistance	-30 °C to +120 °C

BIL GROUP LTD

Porte Marsh Road, Calne, Wiltshire, SN11 9BW

Registered in England No: 2603821

VAT Reg: GB572705729

