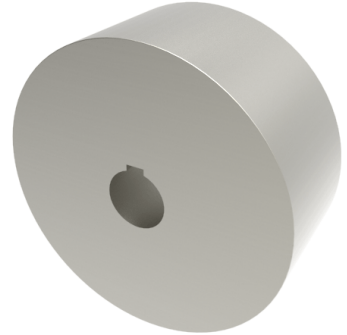


Steel Flat Tread 200mm Keyway Rail Wheel 9300kg

Product code: 200RWMSFTBKM40



POA Heavy duty flat tread steel wheel with keyway. Wheel diameter 200mm, tread width 90mm, bore size 40mm, hub length 90mm. Load capacity 9300kg. ****MANUFACTURED TO ORDER****

Diameter (mm)	200
Tread (mm)	90
Bore Size (mm)	40
Hub Width (mm)	90
Load Capacity (kg)	9300
Wheel Material	Steel
Colour / Shore Hardness	Steel
Temperature Resistance	-30 °C to +120 °C
Bearing Type	Keywayed

BIL GROUP LTD

Porte Marsh Road, Calne, Wiltshire, SN11 9BW

Registered in England No: 2603821

VAT Reg: GB572705729

