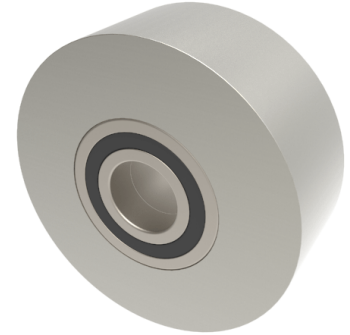


Steel Flat Tread 250mm Ball Bearing Rail Wheel 9000kg

Product code: 250RWMSFTBJM60



POA Heavy duty flat tread steel wheel with ball bearings.
 Wheel diameter 250mm, tread width 100mm, bore size 60mm,
 hub length 100mm. Load capacity 9000kg

****MANUFACTURED TO ORDER****

Diameter (mm)	250
Tread (mm)	100
Bearing Type	Ball
Bore Size (mm)	60
Hub Width (mm)	100
Load Capacity (kg)	9000
Wheel Material	Steel
Colour / Shore Hardness	Steel
Temperature Resistance	-30 °C to +120 °C

BIL GROUP LTD

Porte Marsh Road, Calne, Wiltshire, SN11 9BW

Registered in England No: 2603821

VAT Reg: GB572705729

