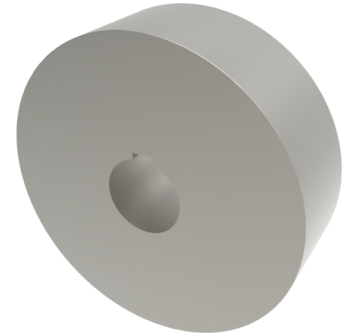


Steel Flat Tread 300mm Keyway Rail Wheel 15400kg

Product code: 300RWMSFTBKM75

POA Heavy duty flat tread steel wheel with keyway. Wheel diameter 300mm, tread width 100mm, bore size 75mm, hub length 100mm. Load capacity 15400kg. ****MANUFACTURED TO ORDER****



Diameter (mm)	300
Tread (mm)	100
Bore Size (mm)	75
Hub Width (mm)	100
Load Capacity (kg)	15400
Wheel Material	Steel
Colour / Shore Hardness	Steel
Temperature Resistance	-30 °C to +120 °C
Bearing Type	Keywayed

BIL GROUP LTD

Porte Marsh Road, Calne, Wiltshire, SN11 9BW

Registered in England No: 2603821

VAT Reg: GB572705729

