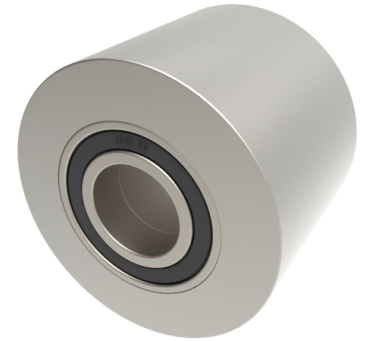


Steel Flat Tread 75mm Ball Bearing Rail Wheel 1140kg

Product code: 75RWMSFTBJM25



POA Heavy duty flat tread steel wheel with ball bearings. Wheel diameter 75mm, tread width 60mm, bore size 25mm, hub length 60mm. Load capacity 1140kg. ****MANUFACTURED TO ORDER****

Diameter (mm)	75
Tread (mm)	60
Bearing Type	Ball
Bore Size (mm)	25
Hub Width (mm)	60
Load Capacity (kg)	1140
Wheel Material	Steel
Colour / Shore Hardness	Steel
Temperature Resistance	-30 °C to +120 °C

BIL GROUP LTD

Porte Marsh Road, Calne, Wiltshire, SN11 9BW

Registered in England No: 2603821

VAT Reg: GB572705729

