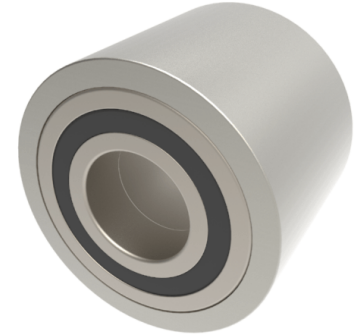


Steel Flat Tread 75mm Ball Bearing Rail Wheel 2040kg

Product code: 75RWMSFTBJM30



POA Heavy duty flat tread steel wheel with ball bearings. Wheel diameter 75mm, tread width 60mm, bore size 30mm, hub length 60mm. Load capacity 2040kg. ****MANUFACTURED TO ORDER****

Diameter (mm)	75
Tread (mm)	60
Bearing Type	Ball
Bore Size (mm)	30
Hub Width (mm)	60
Load Capacity (kg)	2040
Colour / Shore Hardness	Steel
Wheel Material	Steel

BIL GROUP LTD

Porte Marsh Road, Calne, Wiltshire, SN11 9BW

Registered in England No: 2603821

VAT Reg: GB572705729

