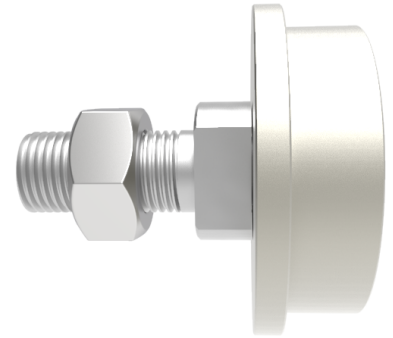


## Steel Parallel Flanged 100mm 'I' Beam Wheel with M30 Axle 1000kg

**Product code: SSAP10025BJ**

Flanged steel parallel tread wheel with ball bearings and steel axle. Wheel diameter 100mm, outer flange 115mm, tread width 25mm, hub length 35mm. Axle M30 x 62mm, Load capacity 1000kg. Suitable for use with ( PFC ) Parallel flange channels.



Wheel Material	Steel
Diameter (mm)	100
Flanged Diameter (mm)	115
Tread (mm)	25
Total Width (mm)	35
Bore Size (mm)	25
Bearing Type	Ball
Nut Width	19
Thread Length (mm)	62
Axle Size	M30
Load Capacity (kg)	1000
Colour / Shore Hardness	Steel
Temperature Resistance	-30 °C to +120 °C