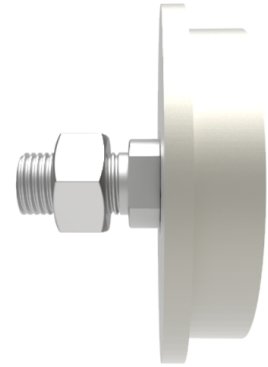


Steel Parallel Flanged 200mm 'I' Beam Wheel with M42 Axle 2000kg

Product code: SSAP20035BJ



Flanged steel parallel tread wheel with ball bearings and steel axle. Wheel diameter 200mm, outer flange 230mm, tread width 35mm, hub length 50mm. Axle M42 x 72mm, Load capacity 2000kg. Suitable for use with (PFC) Parallel flange channels.

Wheel Material	Steel
Diameter (mm)	200
Flanged Diameter (mm)	230
Tread (mm)	35
Total Width (mm)	50
Bore Size (mm)	40
Bearing Type	Ball
Nut Width	20
Thread Length (mm)	72
Axle Size	M42
Load Capacity (kg)	2000
Colour / Shore Hardness	Steel
Temperature Resistance	-30 °C to +120 °C