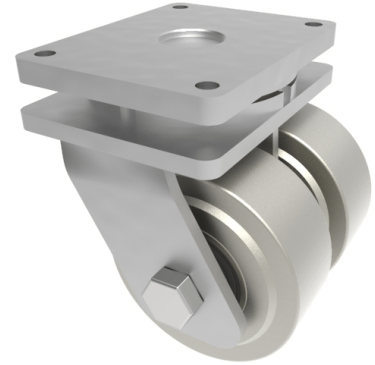


## Steel Plate Swivel Castor 200mm 7500kg Load

**Product code: 2BZXHX200MSTBJ**

Fabricated black painted swivel castor fitted with 2 machined steel wheel with ball bearings. Wheel diameter 200mm, tread 80mm, overall height 280mm, top plate 255mm x 200mm, hole centres 210mm x 160mm. Load capacity 7500kg.



Diameter (mm)	200
Fixing Option	Plate
Castor Type	Swivel
Bearing Type	Ball
Plate Size (mm)	255 X 200
Hole Centres (mm)	210 X 160
Height (mm)	280
Swivel Radius (mm)	200
To Suit Fixing Bolt (mm)	16
Wheel Material	Steel
Colour / Shore Hardness	Steel
Temperature Resistance	&quot;-30 °C TO +80 °C
Tread (mm)	2 x 80
Load Capacity (kg)	7500
Top Plate Thickness (mm)	21
Fork Thickness (mm)	12

### BIL GROUP LTD

Porte Marsh Road, Calne, Wiltshire, SN11 9BW

Registered in England No: 2603821

VAT Reg: GB572705729

