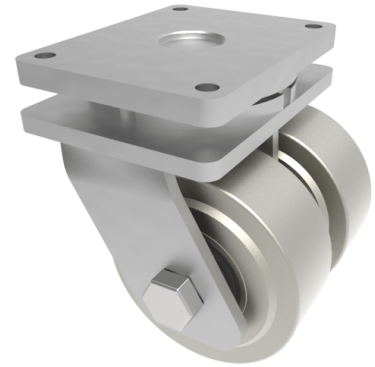


## Steel Plate Swivel Castor 250mm 7500kg Load

**Product code: 2BZXHX250MSTBJ**

Fabricated twin wheel swivel castor with a top plate fixing fitted with a machine steel wheel with ball bearings. Wheel diameter 250mm, tread width 2 x 80mm, overall height 330mm, plate size 255 x 200mm, hole centres 210mm x 160mm. Load capacity 7500kg.



Diameter (mm)	250
Fixing Option	Plate
Castor Type	Swivel
Bearing Type	Ball
Plate Size (mm)	255 X 200
Hole Centres (mm)	210 X 160
Height (mm)	330
Swivel Radius (mm)	225
To Suit Fixing Bolt (mm)	16
Wheel Material	Steel
Colour / Shore Hardness	Steel
Temperature Resistance	&quot;-30 °C TO +80 °C
Tread (mm)	2 x 80
Load Capacity (kg)	7500
Top Plate Thickness (mm)	21
Fork Thickness (mm)	12