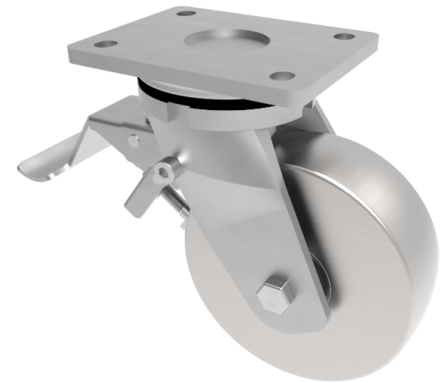


Steel Plate Swivel Castor Brake 125mm 1500kg Load

Product code: BZSAB125MSTBJSWB



Fabricated zinc plated swivel castor with plate fixing fitted with a machined steel wheel with ball bearings and total lock brake. Wheel diameter 125mm, tread width 55mm, overall height 175mm, plate size 138mm x 110mm, hole centres 105mm x 80mm/75mm. Load capacity 1500kg. **** SPECIAL MANUFACTURE 4-6 WEEKS DELIVERY ****

Diameter (mm)	125
Fixing Option	Plate
Castor Type	Swivel with Total Lock Brake
Bearing Type	Ball
Height (mm)	175
Plate Size (mm)	138 x 110
Hole Centres (mm)	105 x 80
To Suit Fixing Bolt (mm)	10
Wheel Material	Steel
Colour / Shore Hardness	Steel
Temperature Resistance	-30 °C TO +80 °C
Top Plate Thickness (mm)	8
Fork Thickness (mm)	6
Swivel Radius (mm)	120
Load Capacity (kg)	550
Tread (mm)	55

BIL GROUP LTD

Porte Marsh Road, Calne, Wiltshire, SN11 9BW

Registered in England No: 2603821

VAT Reg: GB572705729

