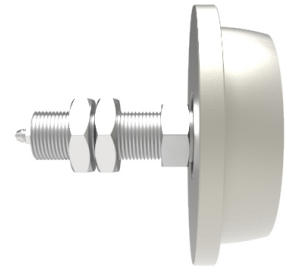


Steel Radiused Flanged 105mm 'I' Beam Wheel with M24 Axle 700kg

Product code: SSAR10525BJ



Flanged steel radiused wheel with ball bearings and steel axle. Wheel diameter 105mm, outer flange 125mm, tread width 25mm, hub length 35mm. Axle M24, Load capacity 700kg. Suitable for use with (RSC) Rolled steel channels.

Wheel Material	Steel
Diameter (mm)	105
Flanged Diameter (mm)	125
Tread (mm)	25
Total Width (mm)	35
Bore Size (mm)	25
Bearing Type	Ball
Nut Width	15
Thread Length (mm)	62
Axle Size	M24
Load Capacity (kg)	700
Colour / Shore Hardness	Steel
Temperature Resistance	-30 °C to +120 °C