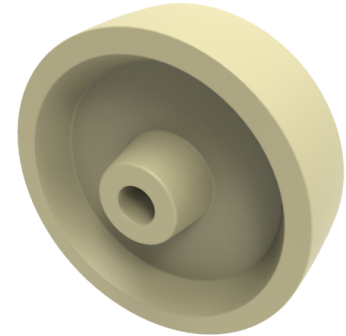


## Thermoplastic 100mm Plain Bearing Wheel 180kg Load

**Product code: WTP100M12WHITE**



Cream colour thermoplastic wheel with plain bearing. Diameter 100mm, tread width 30mm, bore size 12mm, hub length 40mm load capacity 180kg at 300 c.

Wheel Material	Ditherm
Diameter (mm)	100
Load Capacity (kg)	180
Bearing Type	Plain
Bore Size (mm)	12
Tread (mm)	30
Hub Width (mm)	40
Colour / Shore Hardness	White High Temperature Ditherm Thermoplastic
Temperature Resistance	-40 °C to +300 °C

### BIL GROUP LTD

Porte Marsh Road, Calne, Wiltshire, SN11 9BW

Registered in England No: 2603821

VAT Reg: GB572705729

