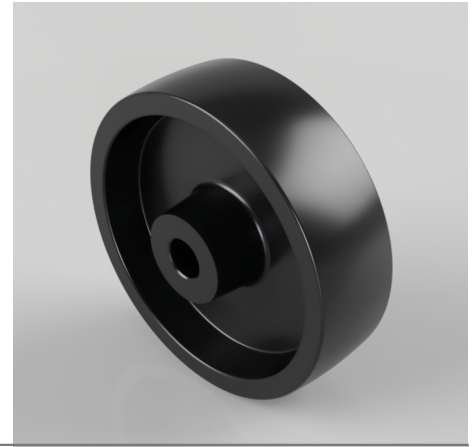


Thermoplastic 100mm Plain Bearing Wheel 180kg Load

Product code: WTP100M12/300

Black thermoplastic wheel with plain bearing. Diameter 100mm, tread width 30mm, bore size 12mm, hub length 40mm load capacity 180kg at 300c. Catalogue SKU: WTP10012/300



Wheel Material	Ditherm
Diameter (mm)	100
Load Capacity (kg)	180
Bearing Type	Plain
Bore Size (mm)	12
Tread (mm)	30
Hub Width (mm)	40
Colour / Shore Hardness	Black High Temperature Ditherm Thermoplastic
Temperature Resistance	-40 °C to +300 °C

BIL GROUP LTD

Porte Marsh Road, Calne, Wiltshire, SN11 9BW

Registered in England No: 2603821

VAT Reg: GB572705729

