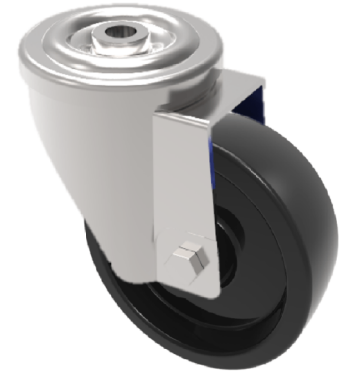


Thermoplastic Bolt Hole Swivel Castor 125mm 230kg Load

Product code: SSMH125TP3BH12

Grade 304 Stainless steel swivel castor with a 12mm bolt hole fitted with a black thermoplastic wheel with plain bore. Wheel diameter 125mm, tread width 40mm, overall height 158mm, Load capacity 230kg at a maximum temperature of 280c



Diameter (mm)	125
Fixing Option	Bolt Hole
Castor Type	Swivel
Head Dia (mm)	78
To Suit Fixing Bolt (mm)	12
Height (mm)	158
Bearing Type	Plain
Swivel Radius (mm)	107
Wheel Material	Ditherm
Colour / Shore Hardness	Black High Temperature Ditherm Thermoplastic
Temperature Resistance	-40 °C to +280 °C
Load Capacity (kg)	230
Tread (mm)	40
Fork Thickness (mm)	2.5