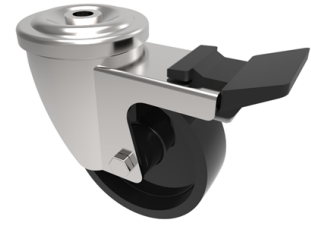


## Thermoplastic Bolt Hole Swivel Castor Brake 80mm 220kg Load

**Product code: BZMH80TP3TFBH12SWB**



Pressed steel swivel castor with a 12mm bolt hole fixing fitted with a black thermoplastic wheel with PTFE bushes and a total lock brake. Wheel diameter 80mm, tread width 30mm, overall height 108mm Load capacity 220kg. Max temp 280 C. REACH compliant, RoHs Compliant, USDA approved FDA approved.

Diameter (mm)	80
Fixing Option	Bolt Hole
Castor Type	Swivel with Total Lock Brake
Head Dia (mm)	78
To Suit Fixing Bolt (mm)	12
Height (mm)	108
Bearing Type	PTFE Bush
Swivel Radius (mm)	125
Wheel Material	Ditherm
Colour / Shore Hardness	Black High Temperature Ditherm Thermoplastic
Temperature Resistance	-40 °C to +280 °C
Load Capacity (kg)	220
Tread (mm)	30
Fork Thickness (mm)	2.5