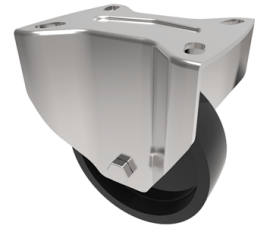


Thermoplastic Plate Fixed Castor 100mm 180kg Load

Product code: BZMMF100TP3TF



Pressed steel fixed castor with top plate fixing fitted with a black thermoplastic wheel with a stainless steel PTFE coated bush. Wheel diameter 100mm, tread width 30mm, overall height 128mm, top plate 105mm x 85mm, hole centres 80mm x 60mm. Load capacity 180kg at 280c consent and 300c peak temperature. REACH compliant, RoHs Compliant, USDA approved FDA approved.

Diameter (mm)	100
Fixing Option	Plate
Castor Type	Fixed
Plate Size (mm)	105 X 85
Hole Centres (mm)	80 X 60
To Suit Fixing Bolt (mm)	8
Height (mm)	128
Bearing Type	PTFE Bush
Wheel Material	Ditherm
Colour / Shore Hardness	Black High Temperature Ditherm Thermoplastic
Temperature Resistance	-40 °C to +280 °C
Load Capacity (kg)	180
Tread (mm)	30
Top Plate Thickness (mm)	2
Fork Thickness (mm)	2