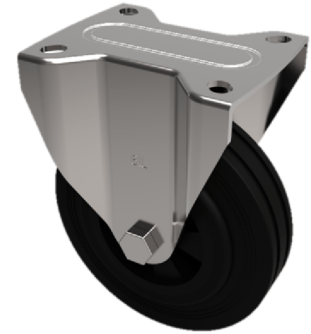


Thermoplastic Plate Fixed Castor 100mm 220kg Load

Product code: BZMHF100TP3



Pressed steel fixed castor with a top plate fixing fitted with a 300oC black thermoplastic wheel with a plain bore. Wheel diameter 100mm, tread width 35mm, overall height 133mm, top plate 100mm x 85mm, hole centres 80mm x 60mm ore 75mm x 45mm. Load capacity 220kg at 280c.

| | |
|--------------------------|--|
| Diameter (mm) | 100 |
| Fixing Option | Plate |
| Castor Type | Fixed |
| Plate Size (mm) | 100 x 85 |
| Hole Centres (mm) | 80/75 x 60/45 |
| To Suit Fixing Bolt (mm) | 8 |
| Height (mm) | 128 |
| Bearing Type | Plain |
| Wheel Material | Ditherm |
| Colour / Shore Hardness | Black High Temperature Ditherm Thermoplastic |
| Temperature Resistance | -40 °C to +280 °C |
| Load Capacity (kg) | 220 |
| Tread (mm) | 30 |
| Top Plate Thickness (mm) | 2.5 |
| Fork Thickness (mm) | 2.5 |