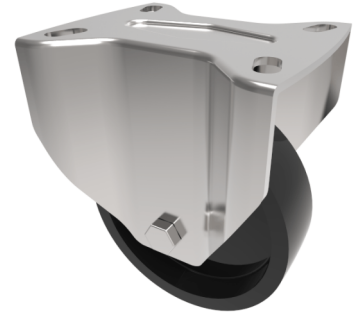


Thermoplastic Plate Fixed Castor 125mm 230kg Load

Product code: SSMHF125TP3



Grade 304 Stainless steel fixed castor with a top plate fixing fitted with a thermoplastic wheel with plain bore. Wheel diameter 125mm, tread width 40mm, overall height 158mm, top plate 100mm x 85mm, hole centres 80mm x 60mm. Load capacity 230kg. 280 DegreeC

Diameter (mm)	125
Fixing Option	Plate
Castor Type	Fixed
Plate Size (mm)	100 x 85
Hole Centres (mm)	80/75 x 60/45
To Suit Fixing Bolt (mm)	8
Height (mm)	158
Bearing Type	Plain
Wheel Material	Ditherm
Colour / Shore Hardness	Black High Temperature Ditherm Thermoplastic
Temperature Resistance	-40 °C to +280 °C
Load Capacity (kg)	200
Tread (mm)	40
Top Plate Thickness (mm)	2.5
Fork Thickness (mm)	2.5