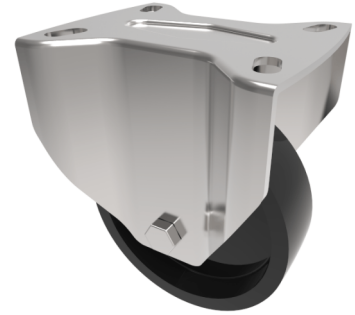


Thermoplastic Plate Fixed Castor 80mm 220kg Load

Product code: SSMHF80TP3TF



Grade 304 Stainless steel fixed castor with a top plate fixing fitted with a black thermoplastic wheel with PTFE Bushes. Wheel diameter 80mm, tread width 30mm, overall height 110mm, top plate 100mm x 85mm, hole centres 80mm x 60mm or 75mm x 45mm. Load capacity 220kg at a maximum 280c.REACH compliant, RoHs Compliant, USDA approved FDA approved.

Diameter (mm)	80
Fixing Option	Plate
Castor Type	Fixed
Plate Size (mm)	100 x 85
Hole Centres (mm)	80/75 x 60/45
To Suit Fixing Bolt (mm)	8
Height (mm)	110
Bearing Type	PTFE Bush
Wheel Material	Ditherm
Colour / Shore Hardness	Black High Temperature Ditherm Thermoplastic
Temperature Resistance	-40 °C to +280 °C
Load Capacity (kg)	220
Tread (mm)	30
Top Plate Thickness (mm)	2.5
Fork Thickness (mm)	2.5

BIL GROUP LTD

Porte Marsh Road, Calne, Wiltshire, SN11 9BW

Registered in England No: 2603821

VAT Reg: GB572705729

