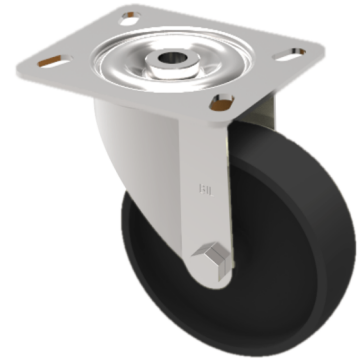


Thermoplastic Plate Swivel Castor 100mm 220kg Load

Product code: BZMH100TP3TF



Pressed steel swivel castor with a top plate fixing fitted with a black thermoplastic wheel with PTFE bush. Wheel diameter 100mm, tread width 30mm, overall height 131mm, top plate 100mm x 85mm, hole centres 80mm x 60mm ore 75mm x 45mm. Load capacity 220kg at 280c consent and 300c peak temperature.REACH compliant, RoHs Compliant, USDA approved FDA approved.

Diameter (mm)	100
Fixing Option	Plate
Castor Type	Swivel
Plate Size (mm)	100 x 85
Hole Centres (mm)	80/75 x 60/45
To Suit Fixing Bolt (mm)	8
Height (mm)	128
Bearing Type	PTFE Bush
Swivel Radius (mm)	92
Wheel Material	Ditherm
Colour / Shore Hardness	Black High Temperature Ditherm Thermoplastic
Temperature Resistance	-40 °C to +280 °C
Load Capacity (kg)	220
Tread (mm)	30
Top Plate Thickness (mm)	2.5
Fork Thickness (mm)	2.5